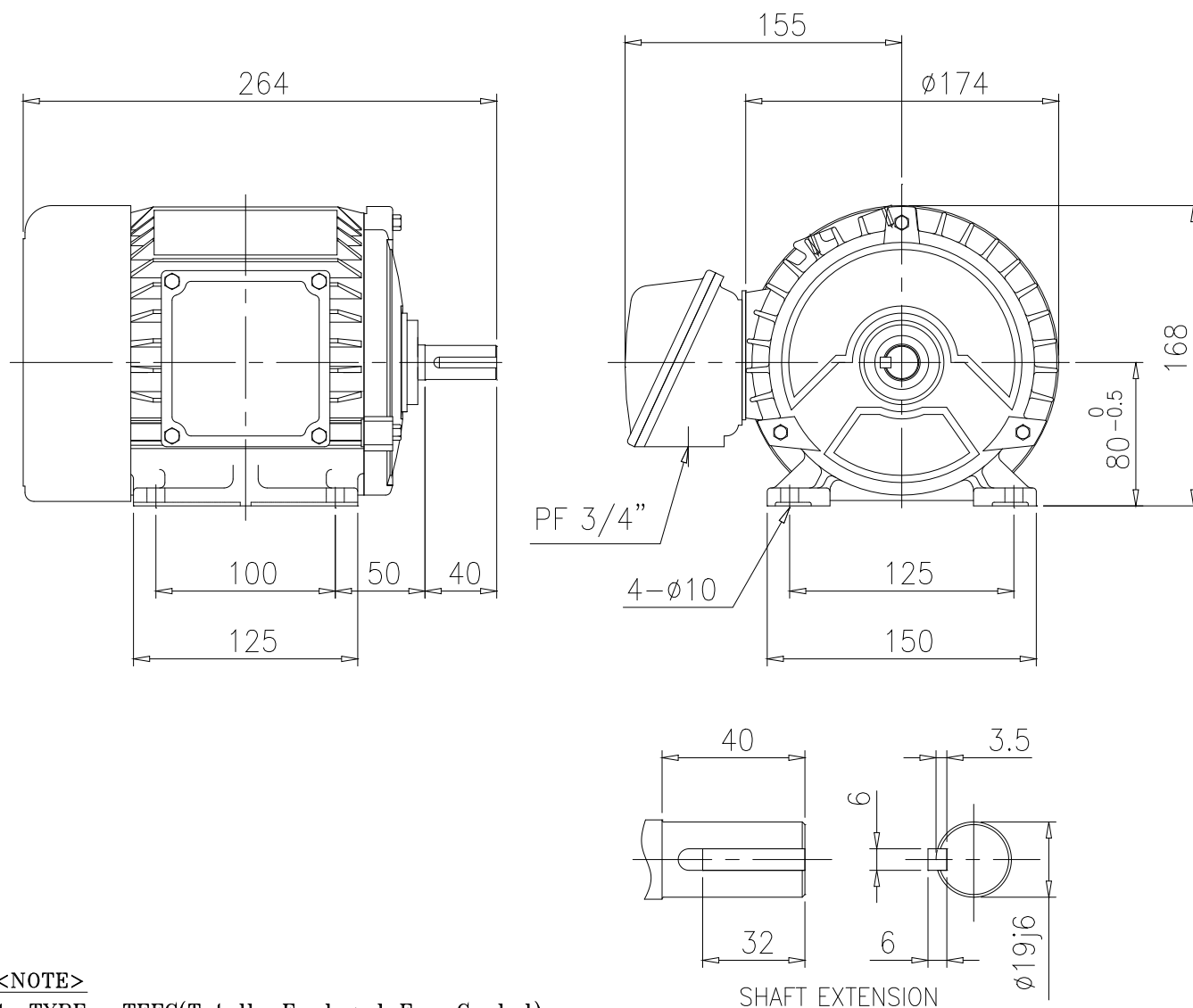


OUTLINE DIMENSION



<NOTE>

1. TYPE : TEFC(Totally Enclosed Fan Cooled)
FOOT MOUNTED TYPE

2. THE TOLERANCE FOR THE KEY DIMENSIONS
IS IN ACCORDANCE WITH KS B 1311-84

3. THE TERMINAL BOX MAY BE ROTATED
STEPS OF 90°ION MOTOR

4. CAST IRON FRAME AND END BRACKETS.

5. STAINLESS STEEL NAME PLATE WITH
CONNECTION DIAGRAM.

6. STEEL FAN COVER AND CAST IRON TERMINAL BOX.

FRAME NO.	OUTPUT (kW)				INS. CLASS	PRO-TEC-TION	RA-TING	BEARING NO.						APPROX. WEIGHT (Kg)		
								2 P		4 P		6P / 8P				
	2P	4P	6P	8P				DRIVE	OPP.D.	DRIVE	OPP.D.	DRIVE	OPP.D.	2P	4P	6P/8P
80	—	0.75	—	—	F	44	CONT	—	—	6204ZZ	6203ZZ	—	—	—	21	—

UNIT	mm	SCALE	N S	PROJECT'N	3rd Angle	TITLE	OUTLINE
DESIGNED		CHECKED		APPROVED			
2008.03.28 S.M.KIM		2008.03.28 J.H.JO		2008.03.28 H.J.KIM		SUBJECT	80Fr, B3
HIGEN Motor Co., Ltd.						DWG. NO.	DW-KME-01HK1