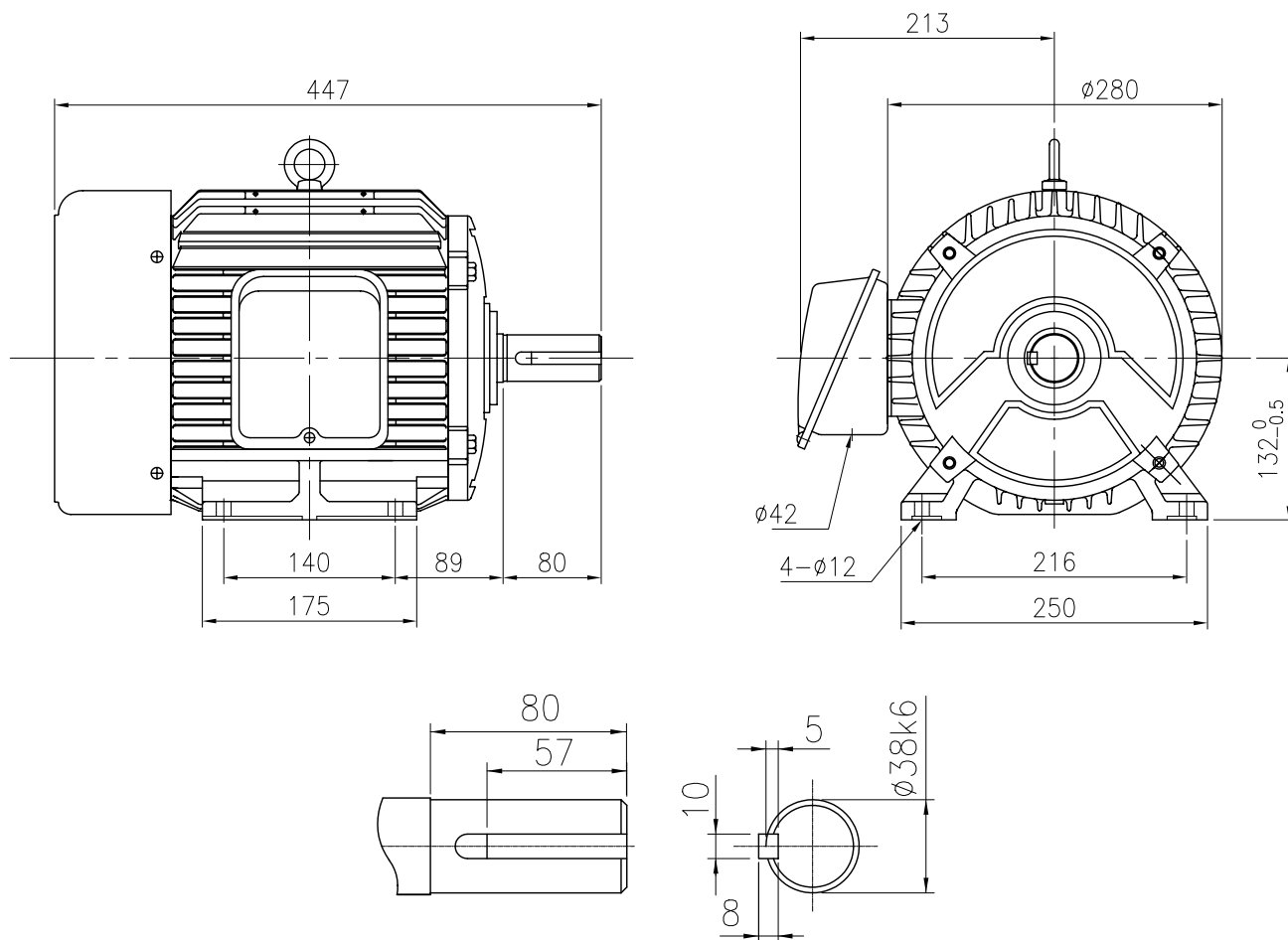


### OUTLINE DIMENSION



#### <NOTE>

#### SHAFT EXTENSION

1. TYPE : TEFC(Totally Enclosed Fan Cooled)

FOOT MOUNTED TYPE

2. THE TOLERANCE FOR THE KEY DIMENSIONS

IS IN ACCORDANCE WITH KS B 1311-84

3. THE TERMINAL BOX MAY BE ROTATED

STEPS OF 90°

4. CAST IRON FRAME AND END BRACKETS.

5. STAINLESS STEEL NAME PLATE WITH CONNECTION DIAGRAM.

6. STEEL FAN COVER AND CAST IRON TERMINAL BOX.

FRAME NO.	OUTPUT (kW)			INS. CLASS	PRO-TEC-TION	RA-TING	BEARING NO.					
							2 P		4 P		6P	
	2P	4P	6P				DRIVE	OPP.D.	DRIVE	OPP.D.	DRIVE	OPP.D.
132S	—	5.5	—	F	IP44	CONT	—	—	6208ZZ	6206ZZ	—	—

UNIT	mm	SCALE	$\frac{N}{S}$	PROJECT'N	3rd Angle	TITLE	OUTLINE
DESIGNED		CHECKED		APPROVED			
2008.07.09 M.S.PARK		2008.07.09 J.H.JO		2008.07.09 H.J.KIM		SUBJECT	132S, B3
HIGEN Motor co., Ltd						DWG. NO.	DW-KMI-08HK1