

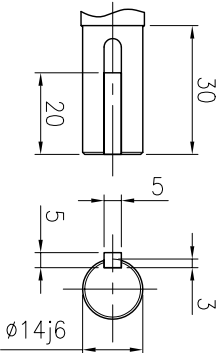
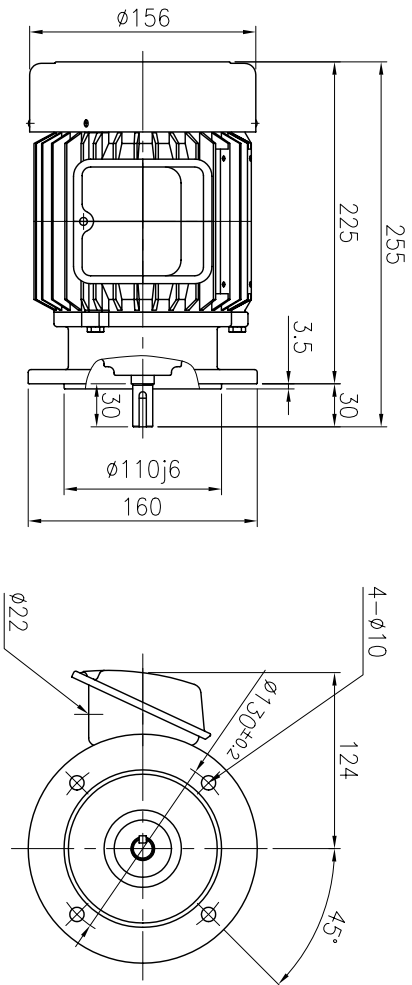
HI

GEN

THREE PHASE INDUCTION MOTOR

TEFC

OUTLINE DIMENSION



SHAFT EXTENSION

- <NOTE>
1. TYPE : TEFC(Totally Enclosed Fan Cooled).

FOOTLESS MOUNTED TYPE
2. THE TOLERANCE FOR THE KEY DIMENSIONS

IS IN ACCORDANCE WITH KS B 1311-04
3. THE TERMINAL BOX MAY BE ROTATED

STEPS OF 90°
4. CAST IRON FRAME AND END BRACKETS.

5. STAINLESS STEEL NAME PLATE WITH

CONNECTION DIAGRAM.
6. STEEL FAN COVER AND STEEL TERMINAL BOX.

FRAME NO.	OUTPUT (kW)				INS. CLASS	PRO-TEC-TION	RA-TING	BEARING NO.				APPROX. WEIGHT (kg)		
	2P	4P	6P	8P				2 P	4 P	6P / 8P	2P	4P	6P /8P	
FF130	—	0.4	—	—	F	IP44	CONT.	—	—	6203ZZ	6203ZZ	—	—	12

UNIT	mm	SCALE	N	S	PROJECT	N	3rd Angle	TITLE	OUTLINE
DESIGNED		CHECKED			APPROVED			SUBJECT	
2007.07.19		2007.07.19			2007.07.19			FF130, VI	
M.S.PARK		H.K.KIM			H.I.KIM				